



LINCOLN NAVIGATOR®



2022



# A calming presence.



Quiet confidence is beyond attractive – it's powerful. Introducing the new 2022 Lincoln Navigator® luxury SUV. Redesigned with a wide array of empowering technologies, refined craftsmanship, and an even more commanding presence. Experience the intelligent evolution of the Lincoln Navigator.



Vehicle imagery throughout this brochure may be computer-generated and may include available equipment and Lincoln Accessories.

REFRESHES YOUR SPIRIT



A bright  
outlook.

Beneath the dimensional form of the new Adaptive Pixel Projector LED headlamps lies sophisticated technology designed to detect and adjust to curves in the road, effortlessly lighting your way.

The visual serenity of the available Monochromatic Package, with its unique grille and stunning 22" black aluminum wheels, is offered only on Reserve models in Infinite Black Metallic, Pristine White Metallic Tri-coat<sup>1</sup> and Ceramic Pearl Metallic Tri-coat<sup>1</sup> (shown).

<sup>1</sup>Additional charge.

As you approach, the Lincoln Navigator<sup>®</sup> dynamic signature lighting flows outward across the front and rear. Luminous welcome mats, backlit door handles, available illuminated, power-deployable running boards and the available illuminated Lincoln Star on the grille invite all inside. As you depart, the lighting flows inward, bidding you a fond farewell.

W E L C O M E S   Y O U





U.S. model shown.

A revitalizing sanctuary.

Every aspect of this serene environment is designed with you in mind. As you enter, the vehicle recalls your saved Personal Profile settings for the driver's seat, driver-assist features, audio, climate and so much more. Controls on the new 13.2" LCD touchscreen let you explore the massage patterns offered by the available 30-way Perfect Position Seats with Active Motion® – which also feature heated and ventilated settings.



E N E R G I Z E S   Y O U



# A cabin that comforts all.

Treat your family to the luxurious comfort of the Lincoln Navigator® interior. The **first vehicle in its class\*** to offer available Active Motion® massage capability in its 2nd-row seats, Navigator also features standard heat and ventilation with its 2nd-row captain's chairs. Enjoy them with your choice of a pass-through to the 3rd row or an available center console. Overhead, the available power, panoramic Vista Roof® provides skyward views as well as plenty of fresh air.

\*Class is Large Traditional Premium Utility.

U.S. model shown.



U.S. model shown.



# Made for the journey.



Create a flat load floor by simply pressing the PowerFold® 2nd- and 3rd-row seat buttons just inside of the liftgate. You'll enjoy up to 3,403 liters of cargo space<sup>1</sup> inside of Lincoln Navigator® L models.



## TRAVELING WITH EASE

To seat up to 8, select the available 2nd-row PowerFold bench seat with heated and ventilated outboard positions, and an independently sliding middle seat. The standard hands-free liftgate lets you access the cargo area by simply kicking your foot beneath the bumper to either side of the trailer hitch. Each Navigator feature is thoughtfully crafted.

<sup>1</sup>Cargo and load capacity limited by weight and weight distribution.



## VOICE-ACTIVATED SYNC® 4



### VOICE-ACTIVATED SIMPLICITY

SYNC 4 makes it easy to listen to your favorite music, handle phone calls and more, while you're on the go.<sup>1</sup> It all works through simple voice commands and the controls on your steering wheel.

The system also features a 13.2" LCD capacitive touchscreen, Navigation System with pinch-to-zoom capability, and wireless phone connection.

SYNC AppLink<sup>®2</sup> gives you voice control of compatible mobile apps on your connected phone, too.

### DIGITAL OWNER'S MANUAL

The Digital Owner's Manual<sup>1</sup> allows you to search for information on many vehicle features by entering a key word or tapping on visual images on the SYNC 4 touchscreen while you're in Park.

### APPLE CARPLAY & ANDROID AUTO COMPATIBILITY

Apple CarPlay<sup>®3</sup> allows you to connect a compatible iPhone<sup>®</sup> and get access to features like:

- Apple Music<sup>®</sup>
- Siri<sup>®</sup> to send and receive hands-free text messages

Android Auto<sup>™4</sup> allows you to connect a compatible Android<sup>™</sup> smartphone to get access to features like:

- Google Maps<sup>™</sup>
- Google Assistant<sup>™</sup> virtual personal assistant, for pass-through voice commands



### ENGAGE WITH ELEVATED AUDIO

The standard 14-speaker Revel<sup>®</sup> and newly available 28-speaker Revel Ultima 3D Audio Systems deliver finely crafted sound in full. Revel Ultima 3D features 8 new speakers embedded in the headliner for a truly elevated experience. Both systems feature personalized listening modes like "Stereo," "Audience" and "On Stage," offering you the freedom to experience different levels of sound immersion. Outstanding, multi-dimensional sound is courtesy of advanced cabin correction tuning, QuantumLogic<sup>®</sup> Surround sound technology and Revel Waveguides. You won't just hear the level of precision and musical accuracy – you'll feel it.

<sup>1</sup>Don't drive while distracted. Use voice-operated systems when possible; don't use handheld devices while driving. Some features may be locked out while the vehicle is in gear. Not all features are compatible with all phones. <sup>2</sup>Commands may vary by phone and AppLink software. <sup>3</sup>Apple CarPlay and its functions are products of Apple and its terms and privacy statements apply. Requires compatible iPhone and data plan. All features supported in Middle East countries are available. <sup>4</sup>Android Auto and its functions are products of Google and its terms and privacy statements apply. Requires compatible Android smartphone with Android Auto app on Google Play and data plan. All features supported in Middle East countries are available.





Confidence comes standard with our extensive collection of driver-assist technologies.<sup>1</sup> They utilize a network of sensors and sophisticated cameras to offer support in many scenarios, helping you feel confident in your Lincoln Navigator® luxury SUV.

STANDARD LINCOLN CO-PILOT360™ 2.0

- Auto High-Beam Headlamps
- Blind Spot Information System with Cross-Traffic Alert and Trailer Coverage
- Evasive Steering Assist
- Adaptive Cruise Control with Stop-and-Go and Lane Centering Assist
- Lane-Keeping System with Blind Spot Assist:  
includes Lane-Keeping Aid, Lane-Keeping Alert, Driver Alert System and Road-Edge Detection
- Pre-Collision Assist with Automatic Emergency Braking (AEB):  
includes Pedestrian Detection, Distance Indication and Alert, Dynamic Brake Support, Forward Collision Warning, Intersection Assist and Post-Collision Braking

STANDARD LINCOLN CO-PILOT360 2.0 VISION

- 360-Degree Camera with Rear Camera Washer
- Active Park Assist 2.0
- Front/Side/Rear Parking Sensors
- Reverse Brake Assist

<sup>1</sup>Driver-assist features are supplemental and do not replace the driver's attention, judgment and need to control the vehicle. It does not replace safe driving. See Owner's Manual for details and limitations.



# An empowering wealth of possibilities.

Lincoln Drive Modes put the power to adapt right at your fingertips. Simply turn the knob to select your mode: Normal, Conserve, Excite, Slippery and Deep Conditions. Beautiful animations on the digital instrument cluster help you make your choice, and the system adjusts automatically to improve your drive.

EMBRACE EACH MOMENT



## TWIN-TURBOCHARGED 3.5-LITER V6

Every Lincoln Navigator® model is powered by the Twin-Turbocharged 3.5-liter V6 engine paired with a 10-speed SelectShift® automatic transmission.

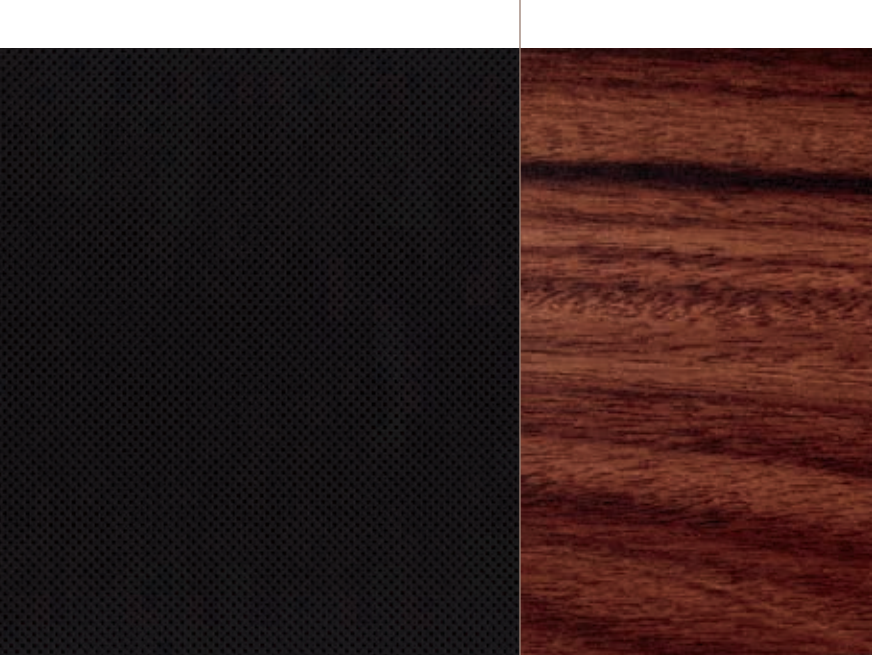
440 HORSEPOWER<sup>1,2</sup> (310 KW)  
691 NM OF TORQUE<sup>1,2</sup>

## GLIDE EFFORTLESSLY

To help you feel calmly in command, Navigator features standard Adaptive Suspension with new Road Preview. It uses a front camera to evaluate and monitor the road ahead. When an upcoming bump in the road is detected, the system prepares the suspension to help lessen the impact on both the vehicle and your comfort.

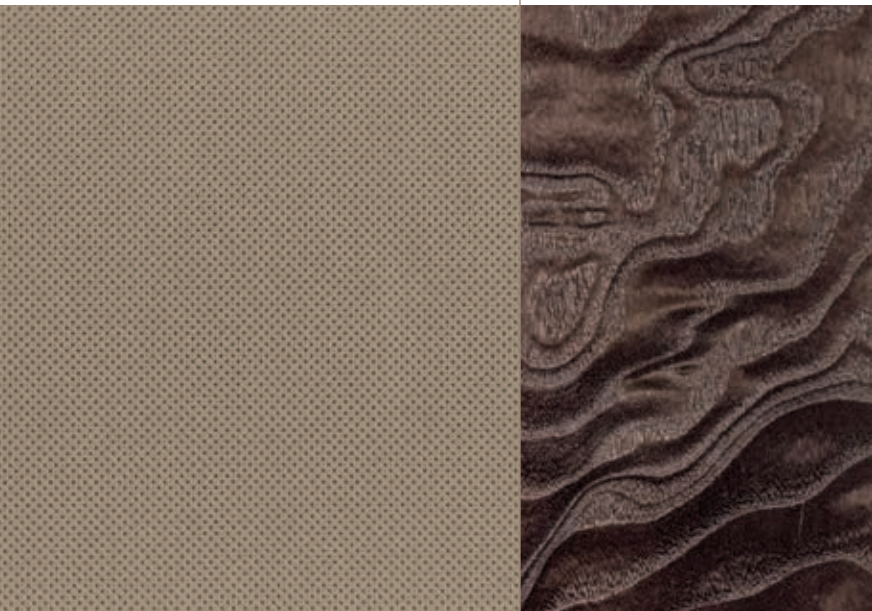






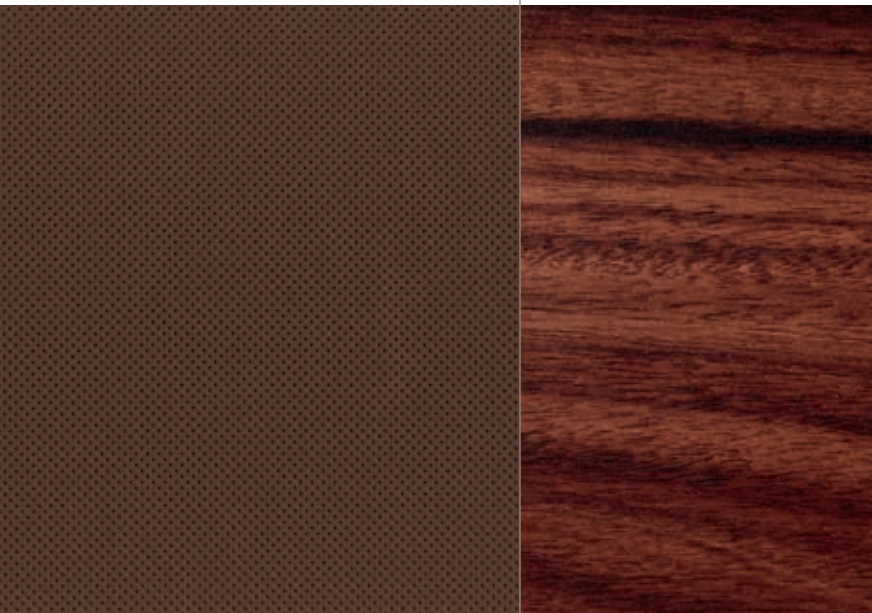
Black Onyx  
Navigator/Navigator Reserve 1-7

Santos Rosewood



Sandstone  
Navigator/Navigator Reserve 1-7

Espresso Ash Swirl

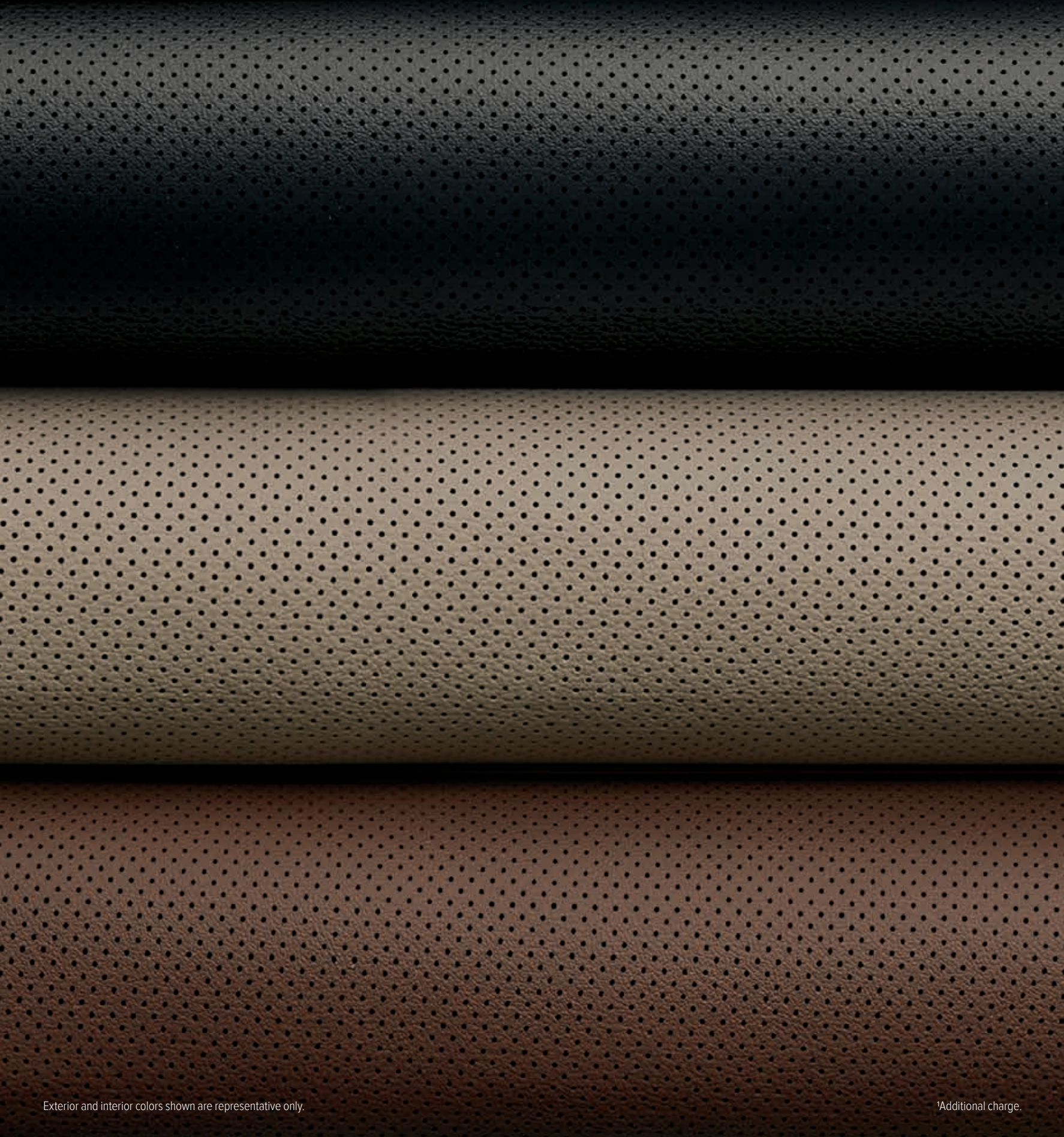


Roast  
Navigator Reserve 1-7

Santos Rosewood

INTERIOR CRAFTSMANSHIP

While creating each distinctive Lincoln Navigator® interior environment, our designers commit themselves to craftsmanship that goes beyond what can be seen. They pour their passion for every detail into each collection of materials, accent trims, and colors – all to ensure every model provides our signature feeling of sanctuary.



Exterior and interior colors shown are representative only.

<sup>1</sup>Additional charge.

	1. Infinite Black Metallic
	2. Silver Radiance Metallic
	3. Pristine White Metallic Tri-coat <sup>1</sup>
	4. Starlight Gray Metallic <sup>1</sup>
	5. Ocean Drive Blue Metallic Tinted Clearcoat <sup>1</sup>
	6. Ceramic Pearl Metallic Tri-coat <sup>1</sup>
	7. Flight Blue Metallic <sup>1</sup>



Some models, trims and features may not be available. See your Lincoln Distributor for details.

STANDARD FEATURES

PERFORMANCE & HANDLING
3.73:1 rear axle ratio
4-wheel drive (4WD)
10-speed automatic transmission with SelectShift® capability and paddle activation
Active Grille Shutters
Adaptive Suspension with Road Preview
Dual exhaust with bright tips
Electric parking brake
Lincoln Drive Modes: Normal, Conserve, Excite, Slippery and Deep Conditions
Side-wind stabilization
<b>Trailer Tow Prep Package:</b> <sup>1</sup> Class IV with 4-/7-pin wiring connectors, Smart Trailer Tow and Trailer Sway Control
LINCOLN CO-PILOT360™ 2.0
Adaptive Cruise Control with Stop-and-Go and Lane Centering Assist
Auto High-Beam Headlamps
Blind Spot Information System with Cross-Traffic Alert and Trailer Coverage
Evasive Steering Assist
Lane-Keeping System with Blind-Spot Assist (includes Lane-Keeping Aid, Lane-Keeping Alert, Driver Alert System and Road-Edge Detection)
Pre-Collision Assist with Automatic Emergency Braking (AEB) (includes Pedestrian Detection, Distance Indication and Alert, Dynamic Brake Support, Forward Collision Warning, Intersection Assist and Post-Collision Braking)
LINCOLN CO-PILOT360 2.0 VISION
360-Degree Camera with Rear Camera Washer
Active Park Assist 2.0
Front/Side/Rear Parking Sensors
Reverse Brake Assist
DRIVER-ASSIST TECHNOLOGY
Auto Hold
Autolamp (Automatic On/Off Headlamps)
Hill Descent Control™
Hill Start Assist
Rain-Sensing Windshield Wipers
DRIVER CONTROLS
Leather- and wood-trimmed, heated steering wheel with controls for audio and cruise
Personal Profiles (memory settings for positions of driver's seat, sideview mirrors, power-adjustable pedals, driver-assist features, audio, climate and displays)
Power-tilt/-telescoping steering column with memory
Power windows with one-touch-up/-down feature
Remote Start System
Tri-zone electronic automatic temperature control with rear auxiliary controls and vents

INTERIOR
1st-row center floor console with winged armrest
1st-row overhead console with sunglasses holder and conversation mirror
2nd- and 3rd-row fast-charging USB ports
3rd-row PowerFold® 60/40 split bench seat with power recline
12" configurable LCD instrument cluster
12V powerpoints (4)
230V power outlet
Ambient lighting
Auto-dimming, frameless rearview mirror
Cargo Management System
Enhanced Active Noise Control
Floor liners in 1st and 2nd rows (includes standard 1st- and 2nd-row carpeted floor mats) <sup>2</sup>
Illuminated front door-sill scuff plates
Symphonic Chimes
Wireless charging pad in 1st-row center console media bin
EXTERIOR
Adaptive Pixel Projector LED headlamps with signature lighting, predictive curve lighting, and sign-based lighting
Chrome roof-rack side rails
Hands-free liftgate with obstacle detection sensor
LED daytime running lamps, fog lamps and taillamps
Lincoln Embrace: LED-illuminated exterior door handle pockets, Lincoln Approach Detection System, Lincoln logo illuminated welcome mats, and Lincoln Signature Lighting with fade on/off
Power-adjustable, autofold, heated sideview mirrors with integrated LED turn signal indicators, memory, auto-dimming driver's side, and black caps
CONNECTIVITY & ENTERTAINMENT
SYNC® 4 with 13.2" LCD capacitive touchscreen, voice command recognition, wireless phone connection, AppLink® wireless Apple CarPlay® compatibility, wireless Android Auto™ compatibility, and Digital Owner's Manual
Touchscreen Navigation System with pinch-to-zoom capability
SAFETY & SECURITY
Personal Safety System™ for driver and front passenger with dual-stage front airbags <sup>3</sup>
Front-seat side airbags <sup>3</sup>
Safety Canopy® side-curtain airbags <sup>3</sup> with rollover sensor
AdvanceTrac™ with RSC® (Roll Stability Control™)
Enhanced security (SecuriLock® Passive Anti-Theft System, perimeter alarm, and intrusion and inclination sensors)
Individual Tire Pressure Monitoring System (TPMS; excludes spare)
LATCH (Lower Anchors and Tether Anchors for Children)
MyKey® technology to help encourage responsible driving
SecuriCode® invisible keypad
SOS Post-Crash Alert System™

NAVIGATOR®

NAVIGATOR RESERVE	
	● Standard ○ Optional ■ Packaged
● ●	<b>Twin-Turbocharged 3.5-liter V6 with Auto Start-Stop Technology</b> 440 hp @ 5,850 rpm <sup>4,5</sup> (310 kW) 691 Nm of torque @ 3,000 rpm <sup>4,5</sup>
●	1st-row auto-heated and -ventilated Comfort captain's chairs with 10-way power adjustability
●	Ebony power-deployable running boards
●	Lincoln Soft Touch seats
●	Revel® Audio System with 14 speakers
● ●	2nd-row heated and ventilated captain's chairs with PowerFold and pass-through to 3rd row
■ ●	Ebony power-deployable, illuminated running boards
■ ●	Power, panoramic Vista Roof® with power sunshade
●	1st- and 2nd-row premium leather seating surfaces; 3rd-row Lincoln Soft Touch seat
●	1st-row passenger-seat memory
●	Head-Up Display
○	● <b>Luxury Package:</b> 1st-row auto-heated and -ventilated Perfect Position Seats with Active Motion® massage functionality and 30-way power adjustability including thigh extenders and head restraints; Revel Ultima 3D Audio System with 28 speakers; illuminated Lincoln Star on grille; and 1st- and 2nd-row illuminated safety belt buckles
○	<b>Navigator Plus Exterior Package:</b> 22" bright-machined aluminum wheels with premium-painted pockets; power, panoramic Vista Roof with power sunshade; and Ebony power-deployable, illuminated running boards
○	● <b>Monochromatic Package:</b> 22" black aluminum wheels, body-color sideview mirror caps, and monochromatic grille and side badging (available only with Infinite Black Metallic, Pristine White Metallic Tri-coat <sup>6</sup> and Ceramic Pearl Metallic Tri-coat <sup>6</sup> )

NAVIGATOR

NAVIGATOR RESERVE	
○ ○	2nd-row 40/20/40 split-folding bench seat with PowerFold, outboard heat and ventilation, and sliding middle section
○ ○	Lincoln Play™ Rear-Seat Entertainment System with 2 pairs of wireless headphones <sup>7</sup>
○ ●	Roof-rack crossbars
○	2nd-row heated and ventilated captain's chairs with PowerFold and 2nd-row center console with 5.8" LCD touchscreen and multimedia audio controls
○	2nd-row heated and ventilated seats with Active Motion massage functionality <sup>8</sup>
○	2nd-row heated and ventilated seats with Active Motion massage functionality and 2nd-row center console with 5.8" LCD touchscreen and multimedia audio controls <sup>8</sup>
WHEELS	
●	<b>A:</b> 20" 12-spoke bright-machined aluminum with painted pockets
■ ●	<b>B:</b> 22" bright-machined aluminum with premium painted pockets
○	<b>C:</b> 22" 12-spoke bright-machined aluminum with Ebony Black-painted pockets
■	<b>D:</b> 22" black aluminum

SEATING

2nd-row configurations: Navigator/Navigator L

7-passenger seating

Captain's chairs with pass through  
Standard: Navigator/Navigator Reserve

Captain's chairs with center console  
Optional: Navigator Reserve

8-passenger seating

40/20/40 bench seat  
Optional

LINCOLN ACCESSORIES

ELECTRONICS
Dash cam systems <sup>7</sup>
Remote Start System
Vehicle security systems
EXTERIOR
Full vehicle covers <sup>7</sup>
Hitch shackle kit <sup>7</sup>
Racks and carriers <sup>7,9</sup>
Roof crossbars <sup>9</sup>
Side window deflectors <sup>7</sup>
Sportz® tent <sup>7</sup>
Trailer towing accessories
Wheel lock kits
INTERIOR
Ash cup/coin holders
Battery jump-start system <sup>7</sup>
Cargo area protectors
Carpeted floor mats
First aid kits
Floor liners
Mini-fridge, portable <sup>7</sup>
Protective pet seat covers <sup>7</sup>
Soft cargo cooler bag
Soft cargo organizers (large and standard sizes)
<b>To Shop – contact your nearest Lincoln Distributor</b>

DIMENSIONS (mm)

	Navigator	Navigator L
Wheelbase	3,112	3,342
Length	5,351	5,652
Height	1,944	1,944
Width		
includes mirrors	2,383	2,383
mirrors folded	2,124	2,124
Head room		
1st row (max.)	1,062	1,062
2nd row	1,015	1,015
3rd row	948	950
Leg room		
1st row (max.)	1,115	1,115
2nd row	1,045	1,045
3rd row	917	917
Hip room		
1st row	1,571	1,571
2nd row	1,565	1,565
3rd row	1,305	1,305
Shoulder room		
1st row	1,656	1,656
2nd row	1,653	1,653
3rd row	1,630	1,634
Cargo volume (liters)		
1st row (behind)	2,925	3,403
2nd row (behind)	1,627	2,077
3rd row (behind)	546	972
Fuel tank (liters)	89	105



A



B



C



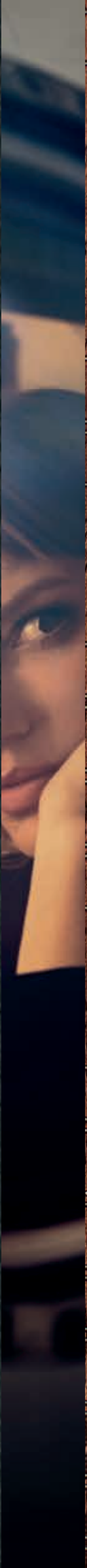
D

Lincoln Licensed Accessories (LLA) are warranted by the accessory manufacturer's warranty. LLA are designed and developed by the accessory manufacturer and have not been designed or tested to Ford Motor Company engineering requirements. Contact your Lincoln Distributor for details and/or a copy of all limited warranties.

<sup>1</sup>Availability varies by market. <sup>2</sup>Do not place additional floor mats or any other covering on top of the original floor mats. <sup>3</sup>Always wear your safety belt and secure children in the rear seat. <sup>4</sup>Horsepower and torque ratings based on premium fuel per SAE J1349® standard. Your results may vary. <sup>5</sup>Horsepower and torque are independent attributes and may not be achieved simultaneously. <sup>6</sup>Additional charge. <sup>7</sup>Lincoln Licensed Accessory. <sup>8</sup>Restrictions may apply. See your Lincoln Distributor for details. <sup>9</sup>Consult Owner's Manual for details on roof-rack load limits.



LINCOLN PRESIDENTIAL  
NAVIGATOR®





# LINCOLN PRESIDENTIAL

Your invitation to the ultimate in Lincoln craftsmanship and luxury. Our 2022 collection features carefully curated design themes inspired by the love of travel, the arts, culture, architecture and more.



## A UNIQUELY ELEVATED AUTOMOTIVE EXPERIENCE.

The Lincoln Presidential collection features premium leathers meticulously crafted to offer both a soft hand and outstanding durability. Custom perforation patterns and precise stitching give our exquisite interiors the perfect finishing touches. Premium exterior paints are designed to enhance the beauty of your Lincoln Presidential vehicle with a luxurious finish.

Lincoln Navigator® preproduction model shown. Vehicles available at Lincoln Presidential Distributors.





# NAVIGATOR CENTRAL PARK

Representing calm in the midst of a bustling city, the new Central Park theme is inspired by one of the world's foremost urban parks. Offered in a quintet of exterior colors, including the striking Manhattan Green Metallic,<sup>1</sup> this harmonious theme features Urban Green Venetian leather seating surfaces with Skyline micro-perforation, plus open-pore Walnut wood trim with laser etching of the park's scenic pathways. It will be your soothing oasis.



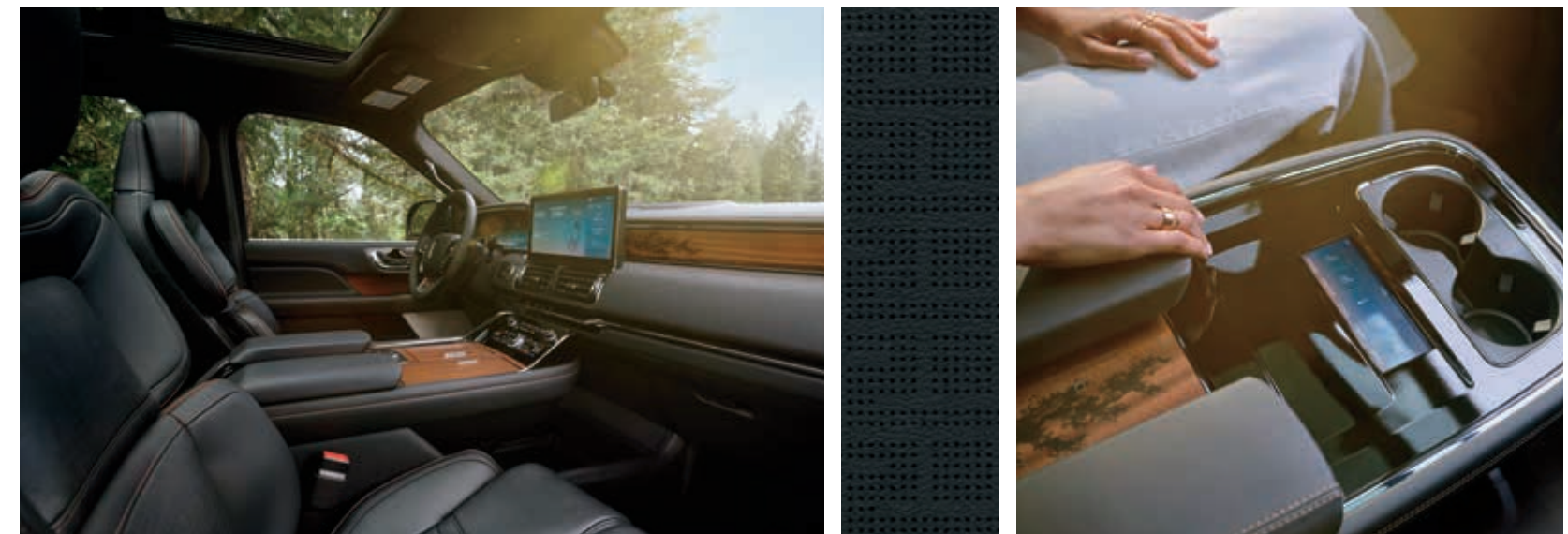
<sup>1</sup>Preproduction model shown. <sup>2</sup>Additional charge.



## NAVIGATOR INVITATION

Evoking the intrigue of a finely crafted invitation to an exclusive evening, the new Invitation theme entices with the richness of open-pore Khaya wood trim and Black Onyx Venetian leather seating surfaces. Industry-first, dual-laser wood etching delicately balances blooming branches with trellis forms, while the pergola-inspired micro-perforation patterned seat inserts enhance the sophistication with their geometric motifs. It's an experience like no other.

Preproduction model shown.



LINCOLN PRESIDENTIAL NAVIGATOR®



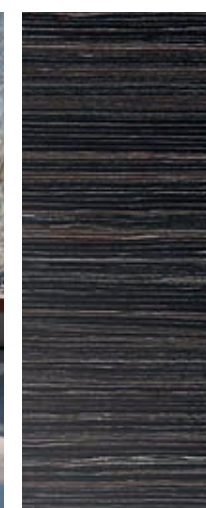
## NAVIGATOR YACHT CLUB

Capture the magic of a light breeze and calm seas on a warm summer day with the refreshing beauty of the Yacht Club theme. All 3 rows of seats have Coastal Blue Venetian leather seating surfaces with linear micro-perforation patterned inserts. Whitewashed Teak trim reinforces the nautical tone, while Sand-colored Dinamica® gives the headliner its pleasantly soft finish. It's all inspired by the finest yachts.

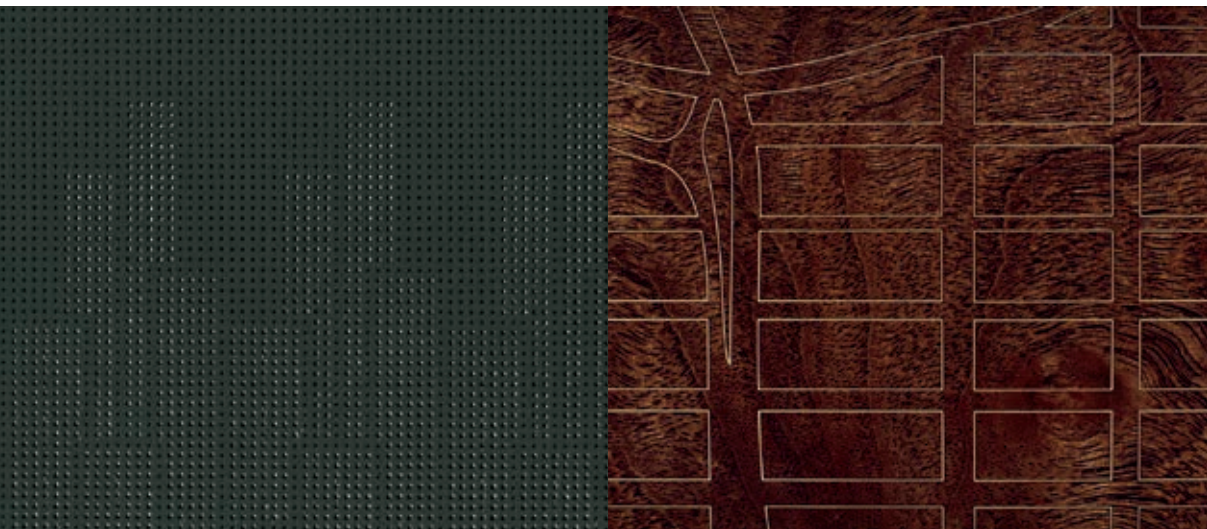


## NAVIGATOR CHALET

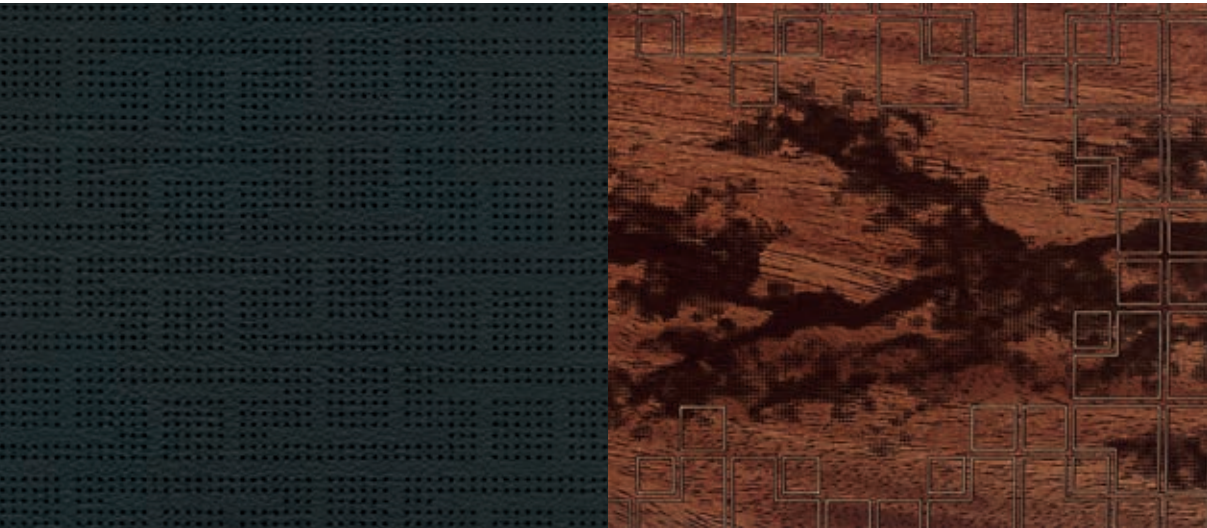
The majestic Chalet theme is designed to awaken your senses to the invigorating luxuries of a mountainside getaway. Alpine- and Espresso-colored leathers commingle in this alluring space featuring Venetian leather seating surfaces with Lincoln Star perforation patterned inserts and a luxurious Alpine-colored Dinamica headliner. Soothingly linear Silverwood appliqué guide you toward rejuvenating peace.







**CENTRAL PARK**  
Urban Green Venetian  
Walnut  
1-5



**INVITATION**  
Black Onyx Venetian  
Khaya  
2-5



**YACHT CLUB**  
Coastal Blue Venetian  
Whitewashed Teak  
2-4, 6



**CHALET**  
Alpine Venetian  
Silverwood  
2-6



1. Manhattan Green Metallic<sup>1</sup>



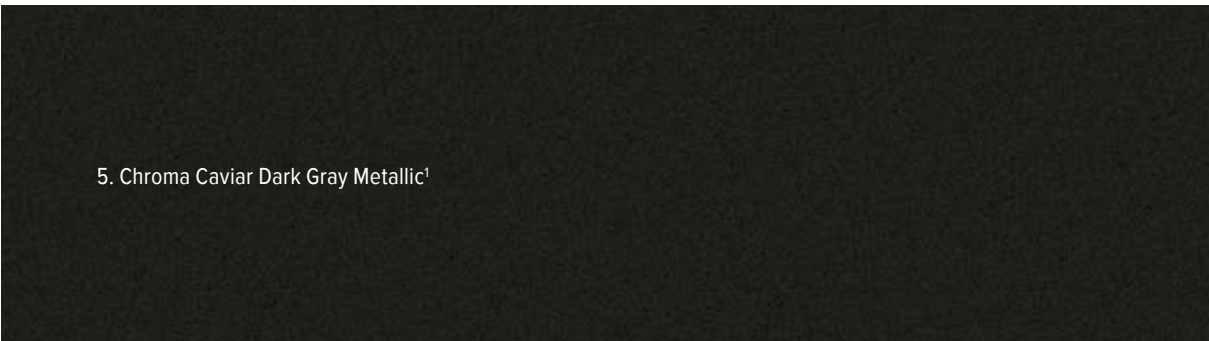
2. Pristine White Metallic Tri-coat



3. Silver Radiance Metallic



4. Infinite Black Metallic



5. Chroma Caviar Dark Gray Metallic<sup>1</sup>



6. Chroma Crystal Blue Metallic<sup>1</sup>



LINCOLN PRESIDENTIAL  
NAVIGATOR & NAVIGATOR L  
STANDARD FEATURES

DIMENSIONS (mm)		
	Navigator®	Navigator L
Wheelbase	3,112	3,342
Length	5,351	5,652
Height	1,944	1,944
Width	includes mirrors	2,383
	mirrors folded	2,124
Head room		
	1st row (max.)	1,062
	2nd row	1,015
	3rd row	948
Leg room		
	1st row (max.)	1,115
	2nd row	1,045
	3rd row	917
Hip room		
	1st row	1,571
	2nd row	1,565
	3rd row	1,305
Shoulder room		
	1st row	1,656
	2nd row	1,653
	3rd row	1,630
Cargo volume (liters)		
	1st row (behind)	2,925
	2nd row (behind)	1,627
	3rd row (behind)	546
Fuel tank (liters)	89	105

Some models, trims and features may not be available. See your Lincoln Distributor for details.

PERFORMANCE & HANDLING

Twin-Turbocharged 3.5-liter V6 engine with Auto Start-Stop Technology
440 hp @ 5,850 rpm <sup>1,2</sup> (310 kW)    691 Nm of torque @ 3,000 rpm <sup>1,2</sup>
4-wheel drive (4WD)
10-speed automatic transmission with SelectShift® capability and paddle activation
Adaptive Suspension with Road Preview
Lincoln Drive Modes: Normal, Conserve, Excite, Slippery and Deep Conditions

DRIVER-ASSIST TECHNOLOGY

Lincoln Co-Pilot360™ 2.0: Adaptive Cruise Control with Stop-and-Go and Lane Centering Assist; Auto High-Beam Headlamps; Blind Spot Information System with Cross-Traffic Alert and Trailer Coverage; Evasive Steering Assist; Lane-Keeping System with Blind Spot Assist (includes Lane-Keeping Aid, Lane-Keeping Alert, Driver Alert System and Road-Edge Detection); Pre-Collision Assist with Automatic Emergency Braking (AEB) (includes Pedestrian Detection, Distance Indication and Alert, Dynamic Brake Support, Forward Collision Warning, Intersection Assist, and Post-Collision Braking)
Lincoln Co-Pilot360 2.0 Vision: 360-Degree Camera with Rear Camera Washer; Active Park Assist 2.0; Front/Side/Rear Parking Sensors; and Reverse Brake Assist
Auto Hold
Autolamp (Automatic On/Off Headlamps)
Hill Descent Control™
Hill Start Assist
Rain-Sensing Windshield Wipers

WARM & WELCOMING

Ebony power-deployable, illuminated running boards
Hands-free liftgate with obstacle detection sensor
Personal Profiles (memory settings for positions of driver's seat, sideview mirrors, power-adjustable pedals, audio, climate and displays)
Power, panoramic Vista Roof® with power sunshade

DESIGN & COMFORT

3rd-row PowerFold 60/40 split bench seat with power recline
12" configurable LCD instrument cluster
Auto-heated and -ventilated 1st-row Perfect Position Seats with Active Motion® massage functionality and 30-way power adjustability including thigh extenders, lumbar and head restraints
Floor liners in 1st and 2nd rows (includes standard 1st- and 2nd-row carpeted floor mats) <sup>3</sup>
Heated and ventilated 2nd-row PowerFold® captain's chairs with pass-through to 3rd row
Luxury sueded cloth headliner
Premium leather throughout cabin including seating surfaces, center console and door armrests, and instrument panel trim
Revel® Ultima 3D Audio System with 28 speakers

DRIVER CONTROLS

Leather- and wood-trimmed, heated steering wheel with controls for audio and cruise
Power-tilt/-telescoping steering column with memory
Power windows with one-touch-up/-down feature
Remote Start System
Tri-zone electronic automatic temperature control with rear auxiliary controls and vents

TECHNOLOGICAL CONVENIENCES

Adaptive Pixel Projector LED headlamps
Head-Up Display
Wireless charging pad

CONNECTIVITY & ENTERTAINMENT

SYNC® 4 with 13.2" LCD capacitive touchscreen, voice command recognition, wireless phone connection, AppLink®, wireless Apple CarPlay® compatibility, wireless Android Auto™ compatibility, and Digital Owner's Manual
Touchscreen Navigation System with pinch-to-zoom capability
2nd- and 3rd-row fast-charging USB ports

LINCOLN EMBRACE

LED-illuminated exterior door handle pockets
Lincoln Approach Detection System
Lincoln logo illuminated welcome mats
Lincoln Signature Lighting with fade on/off

SAFETY & SECURITY

Front-seat side airbags <sup>4</sup>
Individual Tire Pressure Monitoring System (TPMS; excludes spare)
MyKey® technology to help encourage responsible driving
Perimeter alarm
Personal Safety System™ for driver and front passenger with dual-stage front airbags <sup>4</sup>
Safety Canopy® with side-curtain airbags <sup>4</sup> and rollover sensor
SecuriCode® invisible keypad
SecuriLock® Passive Anti-Theft System
SOS Post-Crash Alert System™

OPTIONS<sup>5</sup>

2nd-row 40/20/40 split-folding bench seat with PowerFold, outboard heat and ventilation, and sliding middle section
2nd-row center console with 5.8" LCD touchscreen and multimedia audio controls
2nd-row heated and ventilated seats with Active Motion massage functionality
Lincoln Play™ Rear-Seat Entertainment System with 2 pairs of wireless headphones <sup>6</sup>



22" Bright Machined Aluminum  
with Ebony Black-Painted Pockets  
Standard



<sup>1</sup>Horsepower and torque ratings based on premium fuel per SAE J1349® standard. Your results may vary. <sup>2</sup>Horsepower and torque are independent attributes and may not be achieved simultaneously. <sup>3</sup>Do not place additional floor mats or any other covering on top of the original floor mats. <sup>4</sup>Always wear your safety belt and secure children in the rear seat. <sup>5</sup>Restrictions may apply. See your Lincoln Presidential Distributor for details. <sup>6</sup>Lincoln Licensed Accessory.

Lincoln, Navigator and the Lincoln emblem, Active Motion, AdvanceTrac, AppLink, Hill Descent Control, Lincoln Co-Pilot360, Lincoln Play, MyKey, Personal Safety System, PowerFold, Roll Stability Control, RSC, Safety Canopy, SecuriCode, SecuriLock, SelectShift, SOS Post-Crash Alert System, SYNC, Vista Roof and related marks are trademarks of Ford Motor Company. Android, Android Auto, Google Assistant and Google Maps are trademarks of Google LLC. Apple, Apple CarPlay, Apple Music, iPhone and Siri are trademarks of Apple Inc., registered in the U.S. and other countries. Dinamica is a registered trademark of Miko s.r.l. QuantumLogic, Revel and the Revel logo are trademarks of HARMAN International Industries, registered in the United States and other countries.





---

#### AN IMPORTANT MESSAGE REGARDING AVAILABILITY

As you may be aware, this is a time of high demand for new vehicles, and low inventory. Our industry is experiencing global supply-chain constraints. Unfortunately, the high demand combined with these supply-chain constraints is limiting our ability to build enough Lincoln vehicles. Everyone at Lincoln is working diligently, and creatively, to meet these challenges. What this means for you is that we may have limited or no availability of certain vehicles, models, and features. The vehicles produced may vary slightly from their description here. Please contact your local Lincoln Distributor for updates and assistance.

---

Comparisons based on competitive models (class is Large Traditional Premium Utility), publicly available information and Lincoln certification data at time of printing. Vehicles may be shown with optional equipment. Features may be offered only in combination with other options or subject to additional ordering requirements/limitations. Dimensions shown may vary due to optional features and/or production variability. Information is provided on an "as is" basis and could include technical, typographical or other errors. Lincoln makes no warranties, representations, or guarantees of any kind, express or implied, including but not limited to, accuracy, currency, or completeness, the operation of the information, materials, content, availability, and products. Lincoln reserves the right to change product specifications, pricing and equipment at any time without incurring obligations. Your Lincoln Distributor is the best source of the most up-to-date information on Lincoln vehicles.



Discover at [www.me.Lincoln.com](http://www.me.Lincoln.com)

©2022 Lincoln LATCHA/MENAVIGATOR/22MY